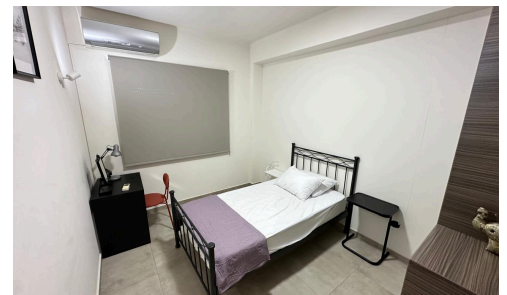
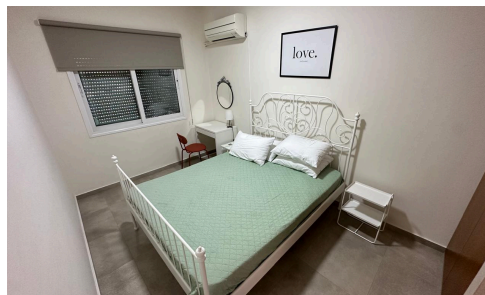


#6597



Four Bedroom Detached House in Panthea area €3,300 /month

Panthea, Limassol

Spacious detached house offering 4 comfortable bedrooms and 2 modern bathrooms, located in the sought-after neighborhood of Panthea. This home is fully furnished, making it ready for you to move in and enjoy right away. With a generous internal space, the house provides plenty of room for families or professionals seeking both comfort and style.

The property boasts a south-facing orientation, filling the living areas with natural light throughout the day. Each bedroom is thoughtfully designed for privacy and relaxation, while the inviting living and dining areas are perfect for both entertaining guests and everyday living. The fully equipped kitchen offers ample storage and modern

Bedrooms

4

Bathrooms

2

Covered

110 m²

DoorWay Real Estate



Paris Zisimos

(+357) 99941629

paris@doorwayrealestatecy.com

